

GENERAL GUIDELINES

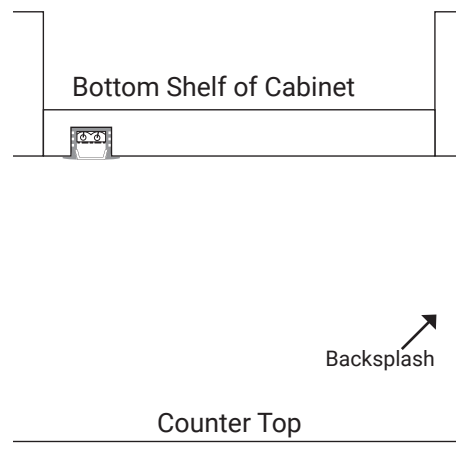
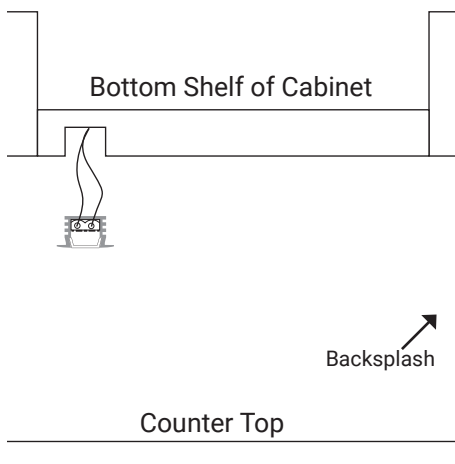
- All wiring must meet NEC or local codes.
- 20/2 solid wire is strongly recommended, from power supply to fixtures, and between fixtures.
- Wire length is maximum of 30 feet from power supply to fixtures.
- Maximum of 75 Watts of sempriaLED lighting is allowed per zone.
- Place switches on the 120V side of power supply.
- If other than Task specified dimmers are desired, call Task Lighting for instructions.
- **Improper installation or applying improper voltage to fixture will void warranty.**
See TaskLighting.com for full warranty info.

POWER SUPPLIES

- 12 VOLT DC Power Supply, supplied by Task Lighting only, must be used.
- Power supply must be accessible; the sink base or top of cabinet are common locations.
- Do not locate power supply in attic.
- Some power supplies may be concealed within our TR Series Angle Power Strip.

PRE-WIRING

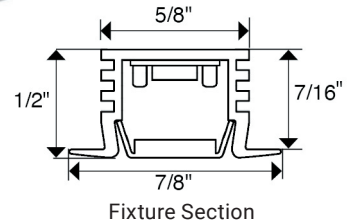
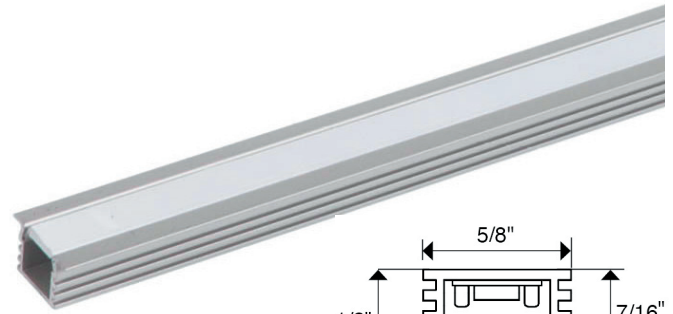
Run separate wire from Power supply location to each zone. If total wattage of sempriaLED fixtures in zone exceeds 75 Watts, use a second power supply and run additional 20/2 solid wire for additional zone. When using two power supplies, start both sets of wires from a common point and wire the zones in opposite directions. Wiring may start at either end of fixture. (Option: separate wire may be run from power supply to each fixture.)



INSTALLATION

1. Using a 5/8" router bit, hollow out a groove (the length of the fixture) from cabinet or shelf bottom.
2. Remove lens from fixture.
3. Strip 1/4" insulation from 20/2 wires that run from power supply. Insert wires into terminal block at either end of fixture (RED wire to terminal with RED mark, BLACK wire to terminal with BLACK mark.)
4. Apply double stick tape (provided) to back of fixture and insert into groove. Fixture will fit tight. Secure fixture with screws (provided).
5. Snap lens back in place.

If using end caps, please refer to the end cap instructions.



GENERAL GUIDELINES

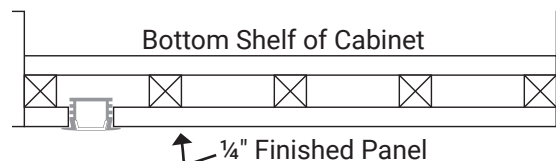
- All wiring must meet NEC or local codes.
- 20/2 solid wire is strongly recommended, from power supply to fixtures, and between fixtures.
- Wire length is maximum of 30 feet from power supply to fixtures.
- Maximum of 75 Watts of Sempria LED lighting is allowed per zone.
- Place switches on the 120V side of power supply.
- If other than Task specified dimmers are desired, call Task Lighting for instructions.
- **Improper installation or applying improper voltage to fixture will void warranty.**
See TaskLighting.com for full warranty info.

POWER SUPPLY

- 12 VOLT DC POWER SUPPLY, supplied by Task Lighting only, must be used.
- Power Supply must be accessible; the sink base or top of cabinet are common locations.
- Do not locate power supply in attic.
- Some power supplies may be concealed within our TR Series Angle Power Strip.

PRE-WIRING

Run separate wire from power supply location to each zone. If total wattage of sempriaLED fixtures in zone exceeds 75 Watts, use a second power supply and run additional 20/2 solid wire for additional zone. When using two power supplies, start both sets of wires from a common point and wire the zones in opposite directions. Wiring may start at either end of fixture. (Option: separate wire may be run from power supply to each fixture.)



Counter Top

INSTALLATION

1. Using a 5/8" router bit, hollow out a groove (the length of fixture) from flush panel.
2. Remove lens from fixture.
3. Strip 1/4" insulation from 20/2 solid wires that run from power supply. Insert wires into terminal block at either end of fixture (RED wire to terminal with RED mark, BLACK wire to terminal with BLACK mark.)
4. Snap lens back onto fixture.
5. Insert fixture into routed groove (fixture will fit tightly.)
6. If needed use a silicone adhesive, **spot-secure** fixture to panel from top-side.
7. Attach flush panel to bottom of cabinet.

If using end caps, please refer to the end cap instructions.